



WEST PARK

WEST PARK, 319 PERTH ROAD, DUNDEE DD2 1NN

TEL: 01382 647171 FAX: 01382 647197

E-MAIL: enquiries@westpark.co.uk

www.westpark.co.uk





WEST PARK



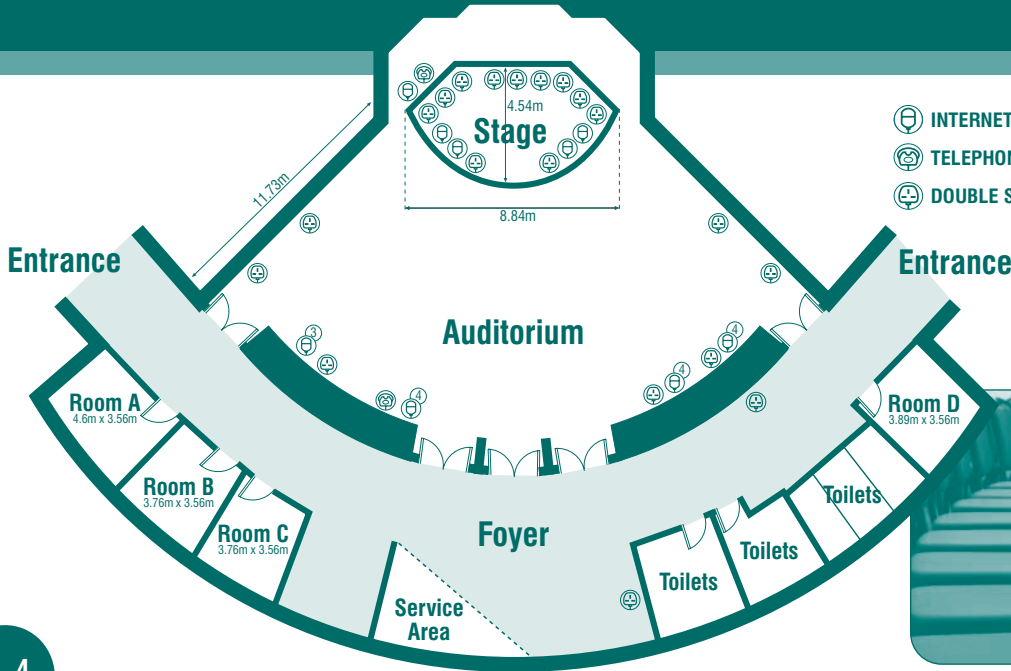
FLOOR PLANS,
LAYOUTS AND
CAPACITIES



CONTENTS

THE SIDLAW SUITE	4 & 5
BALBEGGIE SUITE	6
BURRELTON	7
ERROL	8
INCHTURE	9
LONGFORGAN	10
HENDERSON'S	11
KILSPINDIE	12
GLEN CLOVA	13
GLEN DOLL	14
GLEN ESK	15
GLEN PROSEN	16
GLEN SHEE	17
KINFAUNS BOARDROOM	18
KINGOODIE	19
KINNAIRD	20
CONSERVATORY	21

SIDLAW SUITE



- AUDITORIUM

TOTAL FLOOR AREA -

Auditorium - 26.8sq m

Stage - 10.2sq m

AUDITORIUM CEILING HEIGHT-

Highest - 9.37m

Lowest - 5.72m

FOYER LENGTH -

Entrance to entrance 24.8m



DESCRIPTION

Purpose built Conference Venue with a large horseshoe shaped Auditorium seating up to 300 people. High ceiling with exposed wooden beams.

SPECIALS

Induction hearing loop,
Self contained Conference room
Exhibition space
Coffee area
Ladies, gents and disabled toilet facilities
4 Breakout rooms
Raised stage area

LIGHTS

Ceiling strip lights on a dimmer • Wall lights • Spotlights for stage

DAYLIGHT

Both east and west facing walls have floor to ceiling windows
2 Wide east facing windows (1.873m x 2.095)
1 Individual south facing window (1.292 x 2.095)

HEATING

Central heating with ceiling fans to push down heat to seating area

FLOOR AREA

Main seating area 268sq m • Stage area 10.2 sq m

GROUNDS

Set in lovely gardens with mature trees and shrubs Grass area for space for garden furniture. Area suitable for marquee • 106 Parking spaces

SET-UPS

Theatre	300
Cabaret	130
Classroom	120
Boardroom	50
Horseshoe of tables	36
Seated meal	130
Stand up buffet	300

BALBEGGIE SUITE



DESCRIPTION Rectangular room with south facing windows and fire exit

SPECIALS Induction hearing loop, enclosed floor sockets for power, telephone and ISDN line, spotlights on dimmer switch, exclusive severy area.

LIGHTS 34 Spot lights • 5 Enclosed ceiling lights • 16 Strip lights
4 Wall mounted lights

DAYLIGHT South facing wall 5 Windows (10.583m x 2.311m)

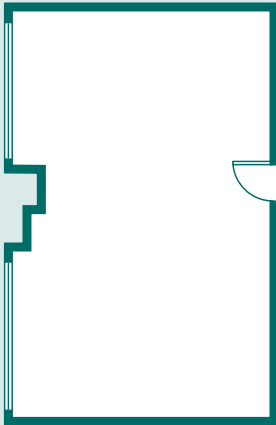
ROOM DIMENSIONS
L - 14.27m W - 10.67m (highest) H - 3.03m (lowest) H - 2.514m
Area - 152.26sqm

HEATING 4 Vertical, electric convectors mounted in corners

SET-UPS	Max
Theatre	130
Classroom	45
Boardroom	48
Horseshoe	36
Cabaret	80

DINING CAPACITY	
Seated rounds	100
Standing buffet	150
Seated rec tables	110

BURRELTON



DESCRIPTION Rectangular room with north facing windows

SPECIALS Telephone and ISDN line

LIGHTS 3 Strip lights

DAYLIGHT 2 Large, north facing windows (1.626m x 1.275m)

ROOM DIMENSIONS
L - 6.407m
W - 4.117m
H - 2.729m
Area 26.4sqm

HEATING 2 Radiators, central heating

SET-UPS	Max
Theatre	20
Boardroom	12
Horseshoe	12
Cabaret	12

DINING CAPACITY	
Seated rounds	6
Standing buffet	20

ERROL



DESCRIPTION Rectangular room with north facing windows

SPECIALS Telephone and ISDN sockets

LIGHTS 2 Strip lights

DAYLIGHT 4 North facing windows
1 x Large (1.627m x 0.614m)
3 x Small (1.307m x 0.594m)

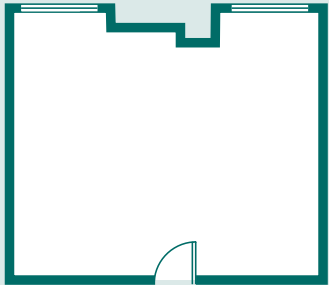
HEATING 1 Radiator, central heating

ROOM DIMENSIONS
L - 4.989m
W - 4.042m
H - 2.712m
Area 20.16m

SET-UPS	Max
Theatre	15
Boardroom	8
Horseshoe	8
Cabaret	8

DINING CAPACITY	
Seated rounds	8
Standing buffet	5

INCHTURE



DESCRIPTION Rectangular room with north facing windows

SPECIALS Telephone and ISDN sockets

LIGHTS 2 Strip lights

DAYLIGHT 1 Large north facing window (1.623m x 1.273m)
1 Small north facing window (1.623m x 0.633m)

ROOM DIMENSIONS

L - 4.580m
W - 4.169m
H - 2.716m

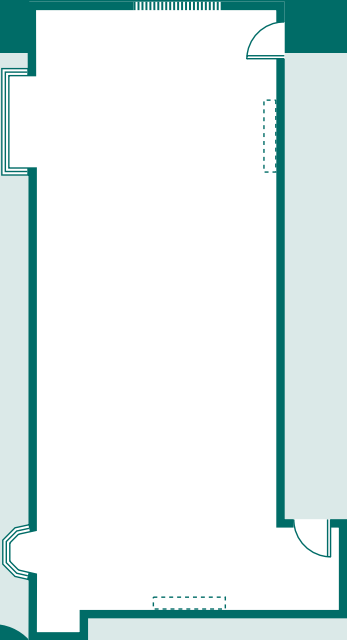
HEATING 1 Radiator, central heating

SET-UPS	Max
Theatre	15
Boardroom	8
Horseshoe	8
Cabaret	8

DINING CAPACITY

Seated rounds	8
Standing buffet	15

LONGFORGAN



DESCRIPTION Rectangular room with 2 bay windows

SPECIALS Moveable diving panel to Invergowrie room, telephone and ISDN connection

LIGHTS 7 x Hanging set of 3

DAYLIGHT Large south facing bay window (4.047m x 2.327m)
Small south facing bay window (2.538m x 2.327m)

HEATING 4 Radiators, central heating
2 Electric fires

ROOM DIMENSIONS

L - 13.292m

W - 5.539m

H - 3.951m

Area 73.62m

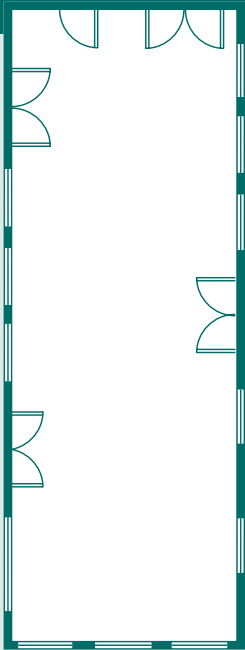
SET-UPS	Max
Theatre	60
Classroom	27
Boardroom	30
Horseshoe	25
Cabaret	32

DINING CAPACITY

Seated rounds	50
Standing buffet	80



HENDERSON'S



DESCRIPTION

Rectangular room with Edwardian leaded windows

SPECIALS

Own entrance, adjoining conservatory

LIGHTS

12 Roof pendants, roof lights on dimmer

DAYLIGHT

3 West facing windows (2 x 2250 x 1100) (1 x 2250 x 1700)

4 South facing windows (2250 x 1670)

4 North facing windows (2250 x 1670)

HEATING

Centrally heated with 8 radiators

ROOM DIMENSIONS

L - 22m

W - 8m

H - 3.15m

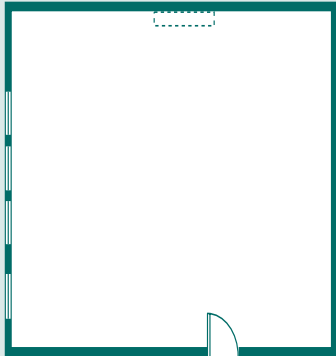
Area 176m²

SET-UPS

	Max
Buffet rounds (10)	100
Dinner rounds (10)	130
Dinner/dance rounds (10)	100
Buffet rectangular	140
Dinner rectangular	170
'U' shape	59
Open board room	66
Closed board room	48
Theatre style	204
Classroom	63
Cocktails	200



KILSPINDIE BOARDROOM



DESCRIPTION Rectangular room with west facing windows

SPECIALS TV aerial, telephone and ISDN line

LIGHTS 4 Hanging bulbs

DAYLIGHT 4 West facing, ceiling height windows (1.954m x 2.207m),
Large skylight

HEATING 2 Radiators, central heating

ROOM DIMENSIONS

L - 7.177m

W - 6.620m

(highest) H - 4.146m

(lowest) H - 3.367m

Area 47.51m

SET-UPS Max

Theatre 50

Classroom 18

Boardroom
with smaller chairs 22
with leather chairs 16

Horseshoe 18

Cabaret 32

DINING CAPACITY

Seated rounds 30

Standing buffet 30

GLEN CLOVA



DESCRIPTION Rectangular room with west facing window

SPECIALS Phone and ISDN line

LIGHTS 4 Hanging strip lights

DAYLIGHT 1 West facing window (2.270m x 1.048m)

HEATING 1 Radiator, central heating

ROOM DIMENSIONS

L - 5.491m

W - 4.195m

H - 3.633m

Area 23.03sqm

SET-UPS Max

Theatre 24

Classroom 12

Boardroom 14

Horseshoe 12

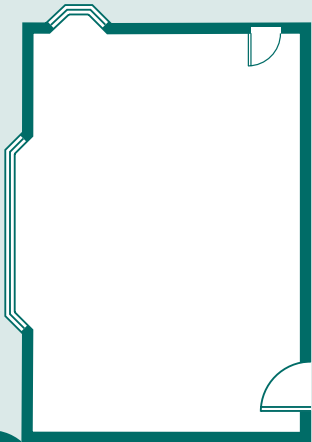
Cabaret 12

DINING CAPACITY

Seated rounds 12

Standing buffet 20

GLEN DOLL



DESCRIPTION Rectangular room with south and west facing windows

SPECIALS Telephone and ISDN lines

LIGHTS 4 x Hanging strip lights

DAYLIGHT 1 West facing window (1.198m x 2.282m)
Row of 3 south facing windows (2.381m x 2.232m)

HEATING 2 Radiators, central heating

ROOM DIMENSIONS

L - 5.415m

W - 5.557m

H - 3.628m

SET-UPS Max

Theatre 30

Classroom 18

Boardroom 18

Horseshoe 16

Cabaret 18

DINING CAPACITY

Seated rounds 18

Standing buffet 20

GLEN ESK



DESCRIPTION Rectangular room with 2 south facing windows

SPECIALS Telephone and ISDN line

LIGHTS 4 Hanging strip lights,
4 Wall mounted lights

DAYLIGHT 2 x South facing windows (2.283m x 1.043m)

HEATING 2 radiators, central heating

ROOM DIMENSIONS

L - 7.728m

W - 5.518m

H - 3.643m

Area 42.64sqm

SET-UPS Max

Theatre 40

Classroom 21

Boardroom 20

Horseshoe 18

Cabaret 21

DINING CAPACITY

Seated rounds 20

Standing buffet 30

GLEN PROSEN



DESCRIPTION Rectangular room with east facing window

LIGHTS Hanging set of 5 candle bulbs

DAYLIGHT 1 Tall, east facing window (2.168m x 0.956m)

HEATING 1 Radiator, central heating

ROOM DIMENSIONS

L - 4.687m

W - 4.279m

H - 3.606m

Area 20.06sqm

SET-UPS Max

Theatre 19

Classroom 12

Boardroom 10

Horseshoe 12

Cabaret 10

DINING CAPACITY

Seated rounds 10

Standing buffet 20

GLEN SHEE



DESCRIPTION Rectangular room with east facing window

SPECIALS Telephone and ISDN line

LIGHTS Hanging set of 5 candle bulbs

DAYLIGHT 1 East facing window (2.272m x 0.979m)
1 West facing skylight

HEATING 1 Radiator, central heating

ROOM DIMENSIONS

L - 4.957m

W - 4.069m

H - 3.620m

Area 20.17sqm

SET-UPS

	Max
Theatre	19
Classroom	12
Boardroom	10
Horseshoe	12
Cabaret	10

DINING CAPACITY

Seated rounds	10
Standing buffet	20

KINFAUNS BOARDROOM



DESCRIPTION

Semi circular with bay window

SPECIALS

Exit into sun lounge and outside;
creston touch screen computer;
control of light, sound and electric curtains;
fixed screen and digital video projector;
air conditioning

LIGHTS

Chandeliers, Wall, Ceiling Lights on dimmer

DAYLIGHT

Bay window

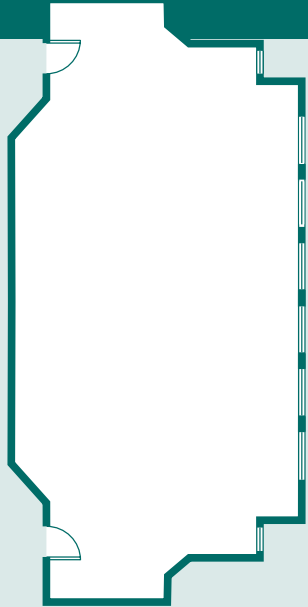
ROOM DIMENSIONS

L - 21.91m
W - 12.10m
(highest) H - 4.30m
(lowest) H - 4.30m
Area - 235.5sqm

SET-UPS

	Max
"U" Shape	40
Boardroom with smaller chairs	22
with leather chairs	16
Horseshoe (with tables)	16

KINGOODIE



DESCRIPTION Rectangular room with large window area

SPECIALS Induction loop hearing, TV aerial, telephone and ISDN line, extractor fans, sloping roof windows with remote control blinds, wall of full length south facing windows

LIGHTS 2 Rows of strip lights
2 Rows of 7 spotlights (1 row with dimmer switch)

DAYLIGHT 6 Full length wide window panes with intermittent narrow vented panes
2 Slim full length windows
8 Skylight panes
Main window (6 large, 5 vents) 7.206m x 2.087m
Narrow windows - 2.087m x 0.954m

HEATING 2 Vertical radiators, central heating

ROOM DIMENSIONS

L- 10.337m W - 5.320m H - 4.721m (highest) H - 2.798m (lowest)
Area - 54.99sqm

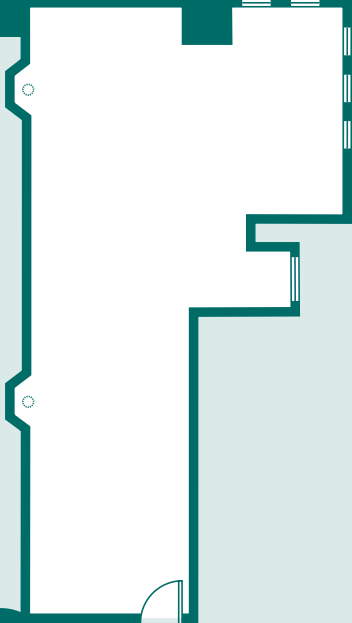
SET-UPS	Max
Theatre	40
Classroom	18
Boardroom	22
Horseshoe	20
Cabaret	21

DINING CAPACITY

Seated rounds	20
Standing buffet	25



KINNAIRD



DESCRIPTION L-shaped room with large south and east facing windows

SPECIALS Induction hearing loop, telephone and ISDN lines, TV aerial, extractor fans

LIGHTS 11 spot lights 6 on dimmer switch
13 strip lights

DAYLIGHT 5 wide south facing windows with 4 narrow vented windows between (4.795m x 2.095m)

2 wide east facing windows (1.873m x 2.095)
1 individual south facing window (1.292 x 2.095)

HEATING 3 vertical radiators, central heating

ROOM DIMENSIONS

L - 12.056m

W - 5.559m (highest) H - 4.718m (lowest) H - 2.831m

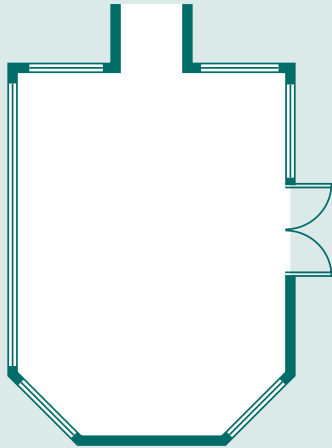
Area - 67.02sqm

SET-UPS	Max
Theatre	20
Boardroom	10
Horseshoe	8
Classroom	12
Cabaret	10

DINING CAPACITY

Seated rounds	10
Standing buffet	30

CONSERVATORY



DESCRIPTION 6 Sided room, all windows

FEATURES All glass panels, bright room, telephone and ISDN points

LIGHTS 8 Hanging bulbs
5 Standing lamps

DAYLIGHT Southeast, south, south west and west facing walls are glass, all other angels face building

HEATING 6 Radiators, central heating

ROOM DIMENSIONS

L - 7.075m
W - 6.560m
(highest) H - 5.383m
(lowest) H - 2.589m
Area 46.41sqm

SET-UPS	Max
Theatre	40
Classroom	18
Boardroom	20
Horseshoe	15
Cabaret	24

DINING CAPACITY

Seated rounds	30
Standing buffet	35

TOUR OPERATORS • LEISURE BREAKS • TRAVEL AGENTS • LEISURE GROUPS

BANQUETING • BUSINESS NEEDS



FAMILY HOLIDAYS • EXHIBITIONS



RESIDENTIAL CONFERRING • SPORTS ACTIVITIES • WEDDINGS • BUS TOURS

TESTIMONIALS

School of Nursing & Midwifery, UOD
John Drummond

"This was the 11th International Philosophy of Nursing Conference and regulars have said it was the best yet. I have no doubt that West Park played a major part in that. There was a real buzz about the place. You and your team are largely to thank for that. Everyone was very impressed with the venue, the accommodation, the food and the organisation".

NHS Quality Improvement Scotland
Katy Bullock

"Please keep everything just the way it is – particularly how easy it was to contact a member of staff at any time when we needed help. Also impressive was the way that every member of staff knew about our event and the requirements, the service was seamless, no matter who we spoke to. This does not happen everywhere!"

Children 1st
Tom Roberts

"We were very happy with the way the event ran. In particular, the West Park staff who helped set up the room and ran the catering were very helpful – this makes a real difference to my job as Event Co-ordinator."

University of Dundee
Agnes Ramsay

"The service we received was outstanding. All staff provided excellent customer care."

NHS Grampian
Tracey Hicks

"The event ran even more smoothly than hoped. We couldn't have asked for better facilities."

Mr & Mrs Stewart – 27/10/07

Excellent night, superb venue. Many have said it was the best Wedding night they have attended!

Mr & Mrs Tasker – 6/10/07

We both had a wonderful day as West Park accommodated all our wishes and have left us with great memories.

Mr & Mrs Barlow – 18/09/07

We were pleasantly surprised to be allocated a Wedding Co-ordinator, and have the services of a Toast Master throughout the day. The Wedding schedule is an excellent idea!

Mr & Mrs Milne – 27/07/07

Our expectations were high and were most definitely met. Our guests are still raving about the venue!

Mr & Mrs Smith – 31/03/07

Our special day exceeded all our expectations, thanks to the exceptional organisation, service and friendliness received at West Park.

Mr & Mrs Burke – 30/09/07

Your attention to detail and smooth running was excellent. The assistance was more than I expected.

C O N F E R E N C E S

F U N C T I O N S